

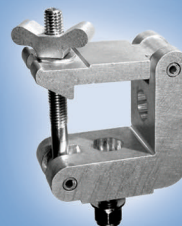
THE LIGHT SOURCE^{INC}

INNOVATIVE



MADE IN THE USA

thelightsource.com • 704-504-8399 • 3935 Westinghouse Blvd. • Charlotte, NC



CLAMPS



Mega-Clamp™

1" to 2" pipe DL 600 lbs
Standard theatrical clamp, spring loaded pan adjustment.
Part Number: MAB



Mega-Swivel™

1" to 2" pipe DL 600 lbs
Pan locking bolt. Fixture rotates on retained steel post.
Part Number: MVM



Mega-Clamp™ Stainless Steel Hardware

1" to 2" pipe DL 600 lbs
Part Number: MABS



Mega-Clamp™ White

1" to 2" pipe DL 600 lbs
Standard theatrical clamp, spring loaded pan adjustment.
Part Number: MAW



Micro-Clamp™

3/8" to 1" pipe DL 125 lbs
For miniature fixtures such as MR 16's. Spring loaded pan adj.
Part Number: MMB



Mini-Clamp™

5/8" to 2" OD truss tube DL 150 lbs DJ style clamp
Part Number: MNB



Mini-Clamp™ White

5/8" to 2" OD truss tube DL 150 DJ style clamp
Part Number: MNW



Mini-Clamp TV™

1 1/4" pipe to 2" OD truss tube DL 150 lbs Shorter handle
Part Number: MNB-TV



Monstro-Clamp™

2" to 4" OD tube DL 250 lbs
CNC cut from solid aluminum plate. Perfect for large tubes.
Part Number: MOB4



Safety-Clamp™

1 1/4" to 2" pipe DL 250 lbs
Snaps onto pipe with a carabineer style latch and cannot fall off.
Part Number: MYB

PIPE ADAPTERS



Mega-Coupler™ Pipe Adapter

Use to rig pipe mounted flat screens, projectors, and speakers from overhead pipe or truss. Two interlocking tabs keep the adapter from rotating. Set screw to lock pipe rotation.
Part Number: MP1.5B.5M



1/2" Pipe to 1/2" Bolt Adapter

Use 1/2" steel water pipe to make custom length adapters.
Part Number: MP.5B.5M



3/4" Pipe to 1/2" Bolt Adapter

Use 3/4" steel water pipe to make custom length adapters.
Part Number: PA-.75NPT-.5X13-M-I



The Mega-Coupler Pipe Adapter™ shown attached to threaded pipe, a Mega-Coupler™, a Quad-Coupler™ 1.5 or a Mega-Claw™.



Mega Tie-Off

The Mega Tie-Off is used back-stage for securing boom base pipes to the grid for safety. The 1/2" eye bolt swivels 360 degrees. Has 1.5 NPT pipe threads and a 1/2" shoulder eye bolt with a two-way lock nut.
Part Number: MTOB

CLAWS



Mega-Claw™

1-1/2" pipe to 2" truss tube
DL 1100 lbs.
The standard for moving lights.
Part Number: MWB



Slim Claw™

1-1/2" pipe to 2" truss tube
DL 600 lbs
For standard theatrical fixtures.
Part Number: SLCB



Mega-TC Clamp™

1.5" to 2" OD tube DL 450 lbs
Supports the load even before
fastening.
Part Number: TCM



Barco Projector Clamp

1.5" OD to 2" OD DL 450 lbs
No tools required. Can adjust 2
inches of height.
Part Number: TCM-BC



TC Swivel Clamp™

1.5" OD to 2" OD, DL 450 lbs
Has two 1/2" T-handles, no
tools are required.
Part Number: TCSB



Mega-Claw™ Swivel

1-1/2" pipe to 2" truss tube
DL 1100 lbs Holds the weight
while joining pipes or truss.
Part Number: MWSM



Mini-Claw™

1-1/4" pipe to 2" truss tube
DL 150 lbs For hanging small
lighting fixtures. Non marring.
Part Number: MIM



Claw Replacement Parts

Part Numbers:
MW-M-HB (Handle)
WS.5SAE-2ZB (Washer)
MWTB (Bolt)



Versi-Clamp™

1" to 2" OD DL 400 lbs. Wraps around the entire range of
standard truss without marring the truss tube. The unique 2 position
latch on the link saves time when switching from 2" truss to a
smaller truss size.
Part Number: VCM

MOTION PICTURE/STUDIO



Maffer Pin Adapter

1/2" by 13 TPI threads on a hex
Maffer stud for fastening the
light fixture to a maffer clamp.
1" Belleville washer and Nylock
nut included.
Part Number: MPA.5-13



3/8" - 16 TPI



1/2" - 13 TPI

Mega-Baby Pin™

Allows motion picture style
lighting fixtures with a 5/8"
receiver to be used with our
clamps with 1/2"-13 or 3/8"-16
mounting threads.
Part Numbers:
MBP.375
MBP.375 FEMALE
MBP.5
MBP.5 FEMALE



Mini-Baby™

1-1/4" pipe to 2" OD, DL 50 lbs
Mounts smaller 5/8" socket
motion picture style fixtures.
Part Number: MNBB



Mega-Baby™

1" pipe to 2" pipe
DL 100 lbs Mounts 5/8" socket
motion picture style fixtures.
Part Number: MBB



Coupler with Baby Pin

1-1/4" pipe to 2" truss tube
DL 100 lbs
Part Number: MLBBP



USA Adapter,™ Short

Allows studio fixtures to be used
with 5/8" stud or 1-1/8" receivers
on motion picture light stands.
Part Number: USAS



USA Adapter™

Allows studio fixtures to be used
with 5/8" stud or 1-1/8" receivers
on motion picture light stands.
Part Number: USA

COUPLERS



Mega-Coupler™

1-1/4" pipe to 2" truss tube
DL 1100 lbs. Standard
1/2" bolts, solid nut tabs.
Part Number: MLB



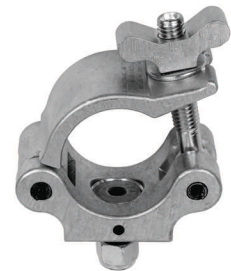
Mega-Coupler™

Stainless Steel Hardware
Stainless steel hardware for out-
door or marine environments.
Part Number: MLMSS



Mega-Coupler™

Countersunk
Mega-Coupler with 1/2"
counter sunk bolt.
Part Number: MLBI/2CS



Mega-Coupler™

Metric Hardware
Available with metric hardware.
Part Numbers: MLM-M10CS,
MLM-M12CS



Mega-Slim Coupler™

1 1/4" pipe DL 500 lbs
Half the width of a regular coupler.
3/8" hardware
Part Number: MSCM



Mini-Coupler™

1.65" to 2" OD tube, DL 330 lbs
1" wide, great for small lights on
truss.
Part Number: MUB



Mega Coupler™ Eye

Has eye nut on 1/2" countersunk
screw for attaching loads to truss,
solid nut tabs.
Part Number: MLBSE



Mega-Coupler Swivel™
Part Number: MLSM



Mega-Coupler™ Fixed 90 Degree
Part Number: ML9B



Bolt Assembly Options

Solid Wing Nut Assembly Steel Wing Nut Assembly Steel Hex Nut Assembly

Mega-Coupler™ Base Options

Hex Mega-Coupler™ Base Countersunk Base Base with 1" Pipe Threads



2" Square Half Coupler™

For 2" Square Tubing
DL 1200 lbs Notched to bolt
onto square tubing.
Part Number: SQC2B



Quad-Coupler™ 1.5

1.25 OD to 1.5 OD tubing &
1" pipe
DL 770 lbs
Part Number: QC1.5M



Quad-Coupler™ 2.5

1.90 OD to 2.50 OD
1.5" to 2" Pipe
DL 1100 lbs
Part Number: QC2.5B



Swivel Couplers

Part Numbers: QC1.5SB,
QC2.5SM, & SQCS2B
Couplers available as swivel,
fixed 90 degree, & parallel.

COUPLERS



Monstro-Coupler3™
3" Tube DL 1100 lbs
Designed for larger than standard
pipe/tubing.
Part Number: MLM3



Monstro-Coupler™
3" Tube to 2" Tube
Part Number: MLSM3to2
Couplers may be combined into
swivels in many configurations.



Standard Monstro-Coupler™
Base



Monstro-Coupler™
Countersunk Base

Monstro-Coupler™	
Part Number	Tube OD
MLM2.375	2.375"
MLM2.5	2.5"
MLM2.875	2.875"
MLM3	3"
MLM 3.625	3.5"
MLM4	4"
MLM4.5	4.5"
MLM5.56	5.563"
MLM6	6"
MLM6.625	6.625"
MLM7	7"
MLM10	10.7"
See website for additional dimensions	

SIDEARMS



Mega-Baby™
Sidearm Slider
Part Number MDBL



Mega-Baby Sidearm™ Tube

Sidearm Tube made of .840 OD pipe. Available in 12", 18" and 24" lengths. Part Numbers: MDB12T, MDB18T, and MDB24T.



Mega-Clamp shown on
Mega-Baby™ Sidearm Slider



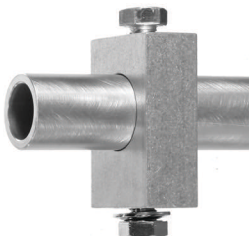
Mega-Baby Sidearm™

A Mega-Clamp that fits 1" to 2" pipe attached to a .840 OD pipe. A Mega-Handle is attached for ease of tightening. Includes clamp, Mega-Handle, tube, and slider. Available in 12", 18", and 24". Part Numbers: MDB12, MDB18, and MDB24.



Mega-Sidearm™ Fixed

A stable 2" Mega-Coupler attached to a 1.315 OD 1" Schedule 80 pipe. Available in 12", 18", 24", 30", & 36". DL 150 lbs @ 24" length. Part Numbers: MSAB12, MSAB18, MSAB24, MSAB30, & MSAB36.



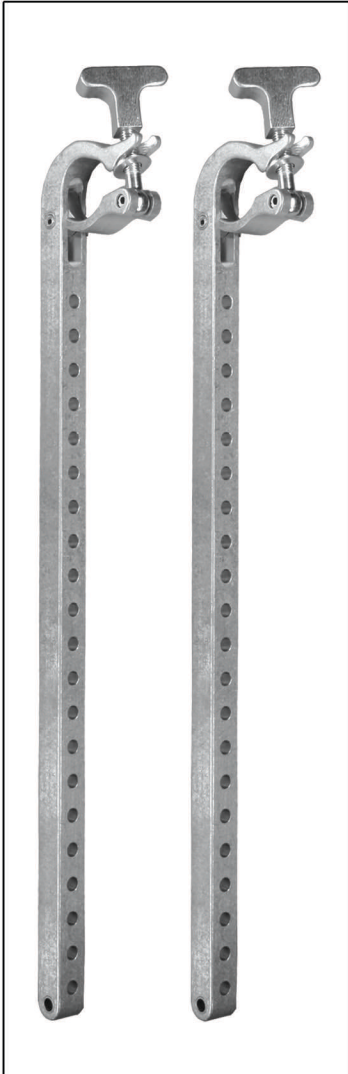
Mega-Sidearm™
Slider
Part Number: MSASM



Super Mega-Sidearm™

Beefy sidearm 1-1/2" schedule 80 pipe. Available in 12", 18", 24", 30", and 36". DL 250 lbs @ 24" length. Part Numbers: SMSAB12, SMSAB 18, SMSAB24, SMSAB30 and SMSAB36.

FLAT SCREEN MOUNTS

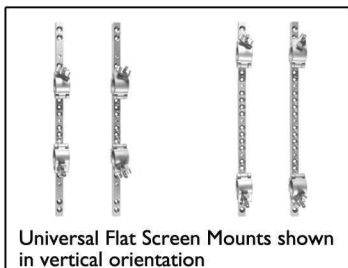


TC Flat Screen Mount™

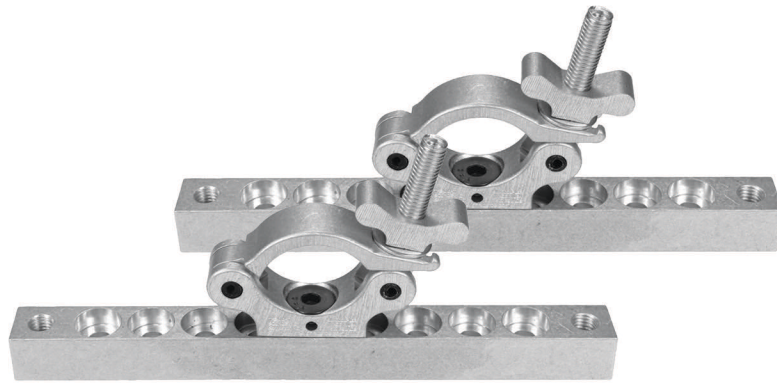
The TC Flat Screen Mount supports a flat screen from a box truss or pipe. Support bolt holes are drilled for the 50, 100, 150, 200, 300, 400 mm VESA standards. DL 250 lbs Part Number: TPM



TC Flat Screen Mount shown attaching flat screen to truss.

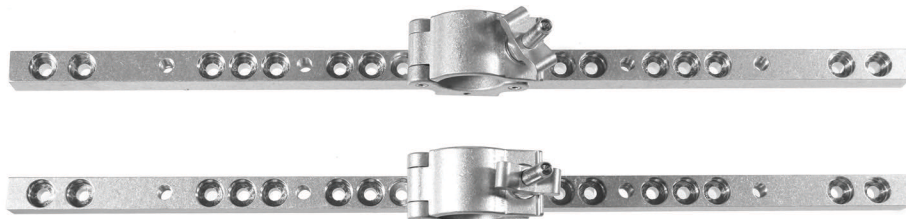


Universal Flat Screen Mounts shown in vertical orientation



Mini-Universal Screen Mount™

11" long, offers a smaller profile option. Fits pipe and 12" truss. Holes are drilled for the VESA standards 50, 100, 150, and 200 mm. The attached Slim Coupler has a 1/2" flat head socket screw. DL 250 lbs Part Number: UPM



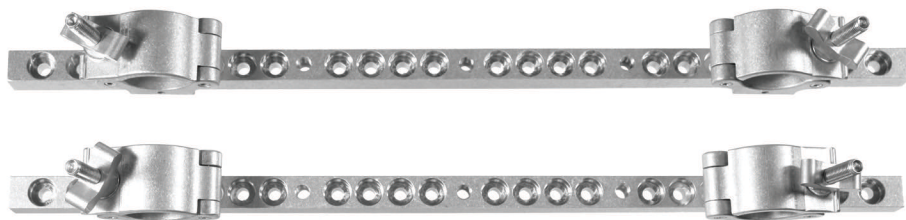
Universal Flat Screen Mount™

The Universal Flat Screen Mount supports a flat screen on a horizontal or vertical pipe. Two Mega-Couplers™ are provided for each set. The mounting bars are bolted directly to the flat screen with two 8 mm or 10 mm bolts per bar. (Bolts not included.) The support bolt holes are drilled for the 50, 100, 150, 200, 300, 400, 660 mm VESA standards. DL 250 lbs Part Number: UPM



Universal Flat Screen Mount-2™

The Universal Flat Screen Mount-2 supports a flat screen on a horizontal or vertical pipe. Four Mega-Couplers™ are provided for each set. Shown configured for 12" truss. DL 400 lbs Part Number: UPM-2



Universal Flat Screen Mount-2™

The Universal Flat Screen Mount-2 supports a flat screen on a horizontal or vertical pipe. Four Mega-Couplers™ are provided for each set. Shown configured for 20.5" truss. DL 400 lbs Part Number: UPM-2

TENT CLAMPS



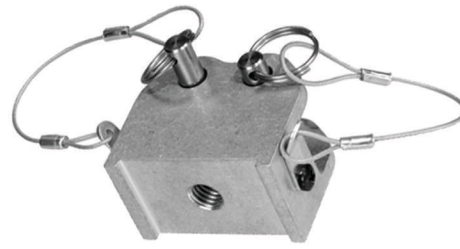
CPC Light Mount Bracket™

Connect a light fixture anywhere along the length of the chain.
Part Number: CPC-AB-2



CPC Chandelier Chain Mount™

For mounting chandeliers with 1/2" square bar. Mounts anywhere along the length of the chain.
Part Number: CPC-AB-CMB



CPC Coupler Chain Mount™

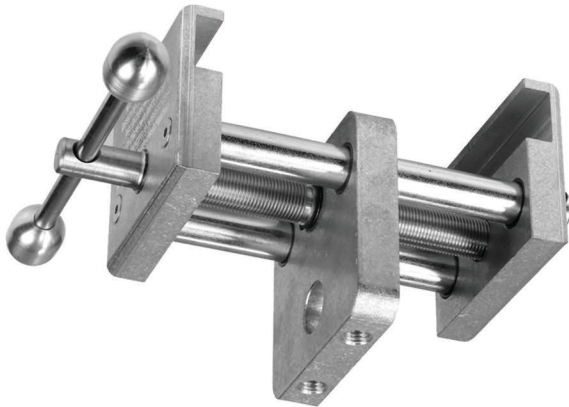
Allows an attached Mega-Coupler™ to be attached anywhere along the length of the chain.
Part Number: CPC-AB-MCMB



Tent Beam Clamp

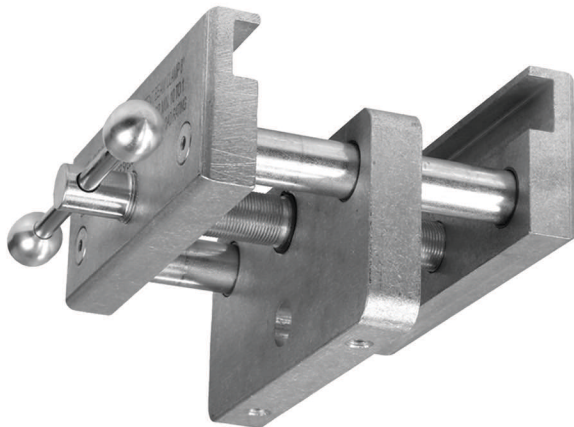
Connects one half inch slot tent beam to 1/2"-13 bolt for lighting fixtures.
Part Number: TBC

TENT BEAM CLAMPS



Mega Tent Beam Clamp,™ 4"

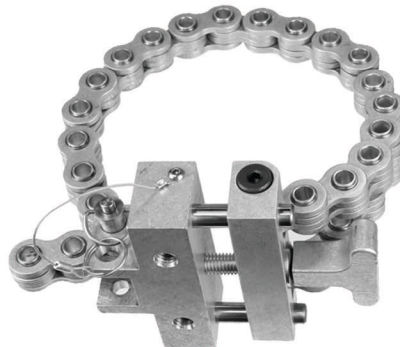
DL 2000 lbs Part Number: MTBC4



Mega Tent Beam Clamp,™ 8"

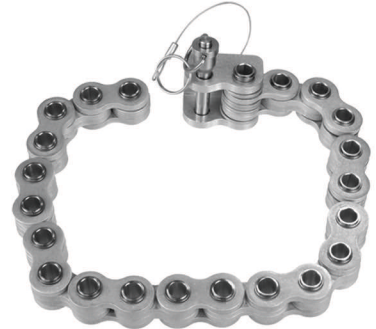
DL 4000 lbs Part Number: MTBC8
Opens 5-1/4" to fasten securely into the Keder track slot in free span tents. Center hole for a 5/8" shackle and two drilled and tapped 1/2" 13 tpi holes for attaching Mega-Couplers™ to hold pipe.

TENT CHAIN CLAMPS



Chain Pole Clamp™

Clamps securely to 2.375" to 7" OD tent poles utilizing many contact points to maximize grip.
DL 1000 lbs
Part Number: CPC



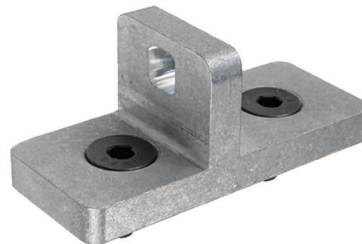
CPC Chain Extension™

Extends the grip range of the Mega Tent Pole Clamp™ from 7" diameter out to 14" diameter.
Part Number: CPC-EK

CPC Chain Hoist Adapter™

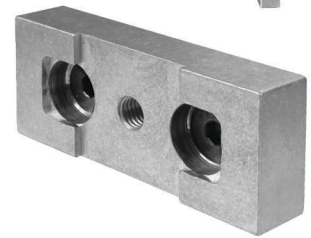
The Chain Hoist Adapter is the lowest profile and cleanest looking method of connecting a chain motor to a tent pole. CNC machined from 6061 T-6 aluminum billet, will support up to one ton when secured with two of the Chain Pole Clamps to a sufficiently rated tent pole.

Part Number: CPC-CHA



CPC Chandelier Mount™

The substantial body has a square cross section hole for securing 1/2" bar or tube chandelier mounts.
Part Number: CPC-MBCM



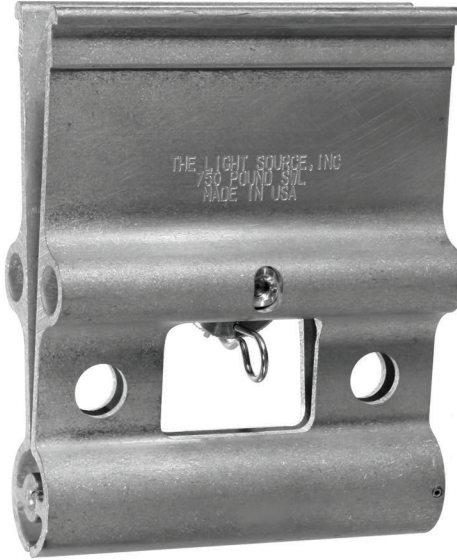
CPC Coupler Adapter™

Fasten a Mega-Coupler™ 1/2 CS to the adapter connected to the main body of the chain pole clamp.
Part Number: CPC-CPA

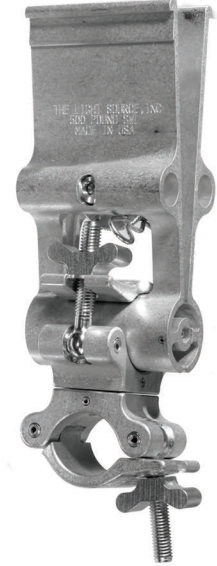
AIRWALL HANGERS



4" Mega-Airwall Hanger™
Great for cable picks and fixtures.
DL 500 lbs Part Number: MEM4



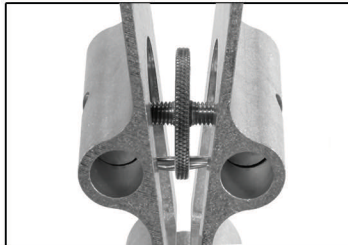
7" Mega-Airwall Hanger™
Designed for larger loads.
DL 750 lbs Part Number: MEM7



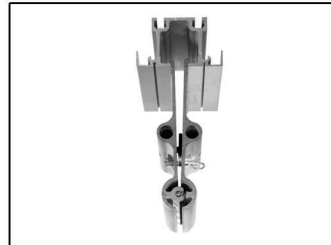
Swivel Coupler Airwall Hanger™
Use to attach pipe to moveable wall.
Part Number: MEM4-MLSM



Turn the wheel to expand, then lock with the cotter pin.



Knurled wheel opens the Mega-Airwall Hanger™

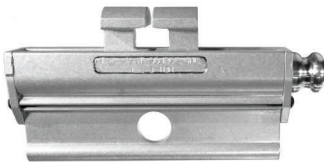


The full width engages onto the moveable wall support.

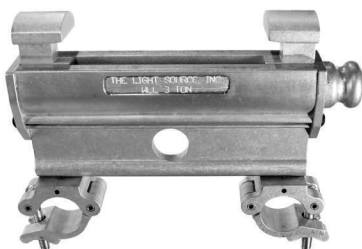


Micro Airwall Hanger™
DL 250 lbs Part Number: TBC

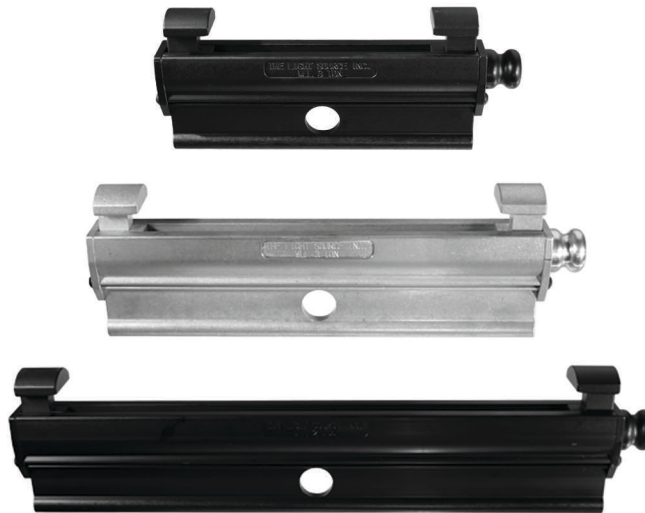
BEAM CLAMPS



All Mega-Beam Clamps™ can clamp as small as 2"



Mega-Coupler Beam Clamp™
Directly supports box truss from an I-Beam
Part Number: MBC3T-8M-MLM



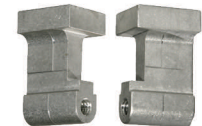
Mega-Beam Clamp™

Mega-Beam Clamps have a 3/4"- 6 Acme L & R threaded self-locking clamping shaft. The spring loaded handle snaps in to lock on steel dowel pins as an added safety factor. The connection hole is for chain motor hooks or shackles. Available in 8", 10", 16" (DL 6,000 lbs), and 24" (DL 4,000).
8" Part Number: MBC3T-8B

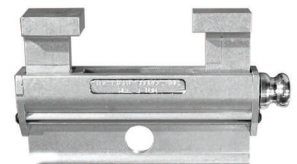
Optional Jaws



Angled Jaw Set



2" Jaw Set, Part Number: MBC2INCHJAWS

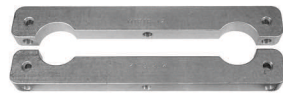


Shown with 2" jaws
(Reduces opening by 2")

TRUSS PICKS



Universal Truss Pick
Adjusts to all standard 2" tube cord truss.
DL 2,000 lbs
Part Numbers:
UTP (silver), UTPB (black)



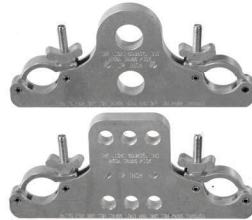
Threaded Rod Truss Pick
Multiple sizes available. DL 2,000 lbs
12" Part Number: MTPTR12M



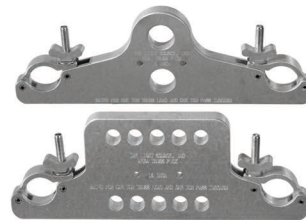
Christie Lites 16" Truss Pick™
For Christie Lites 16" truss only.
DL 2,000 lbs Part Number: MTPCL16



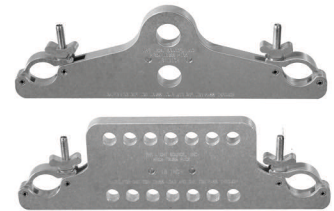
11-7/16" Mega-Truss Pick™
Fits Global, Prolyte, Milos, etc.
DL 2,000 lbs Part Number: MTP11.4375



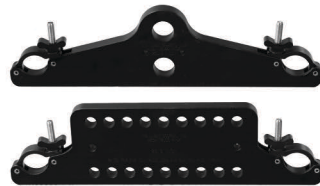
12" Mega-Truss Pick™
Fits 12" truss with 2" OD cord tubes.
DL 2,000 lbs Part Number: MTP12



16" Mega-Truss Pick™
Fits 16" truss with 2" OD cord tubes.
DL 2,000 lbs Part Number: MTP16



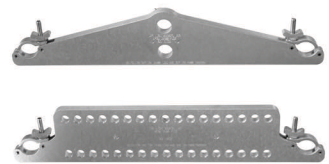
18" Mega-Truss Pick™
Fits 18" truss with 2" OD cord tubes.
DL 2,000 lbs Part Number: MTP18



20.5" Mega-Truss Pick™
Fits 20.5" truss with 2" OD cord tubes.
DL 2000 lbs Part Number: MTP20.5B



24" Mega-Truss Pick™
Fits 24" truss with 2" OD cord tubes.
DL 2,000 lbs Part Number: MTP24.



30" Mega-Truss Pick™
Fits 30" truss with 2" OD cord tubes.
DL 2,000 lbs Part Number: MTP30

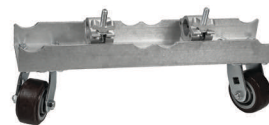
MEGA-TRUSS DOLLIES™



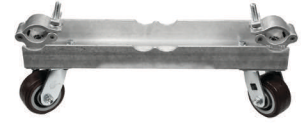
Truss Shown on Truss Dollies



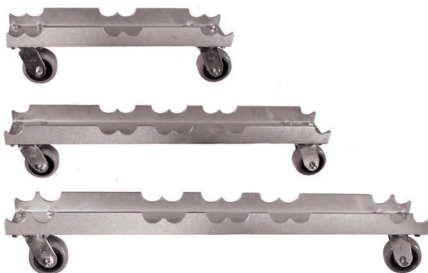
E-Strap, 16" long, Part Number: MTDESTRAP



12" Mega-Coupler Truss Dolly with Inside Mega-Couplers™
Part Number: MTD12/2ML-IS



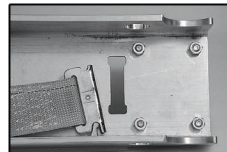
12" Mega-Coupler Truss Dolly with Outside Mega-Couplers™
Part Number: MTD12/2ML-OS



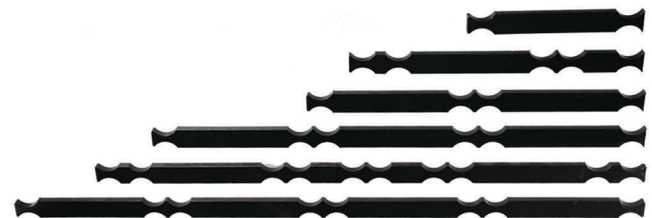
Truss Dollies

Truss nests into CNC machined pockets on 5" U-channel. 4" x 2" heavy duty castors. DL for each dolly is 800 lbs. Available in multiple sizes. Sold in pairs. E-straps available separately.

Part Number for 24" is MTD 12/2-20.5/I



Machined Slot for E-strap



Truss Stackers

Truss stackers are made of MDPE, medium density polyethylene. The notches keep the truss neatly stacked and prevent damage from rubbing or scratching. Available in 12", 20.5", 11.4375", and in multipiles up to a maximum of 48" overall length. Part Number for 20.5": MTDTSB20.5/2

GRID SYSTEMS, EXTRAS



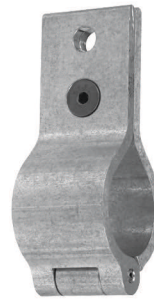
Mega-Gridlock™

1-1/4" pipe to 2" truss tube
DL 1250 lbs Joins 2 overlapping
pipes in a 90 degree or parallel.
Part Number: MGB



Mega-Batten Clamp™

Uses the same hardware and wrench
as the rest of the grid system. 1/2"
hole in top for shackles DL 1250 lbs
Part Number: MBATB



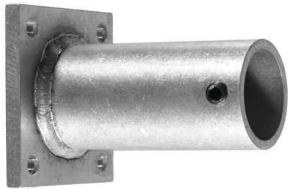
Mega-Folding Batten Clamp™

One piece, hinged batten hanger is the
fastest way to hang 1-1/2" pipe. Only
one fastener locks the hanger to the pipe.
DL 1675 lbs Part Number: MFBATM



Threaded Rod Hanger for Mega-Batten Clamp™

Connects to the Mega-Batten Clamp to
hang from threaded rod, .375 and .500
DL 1250 Part Number: MBAT-TRH.375



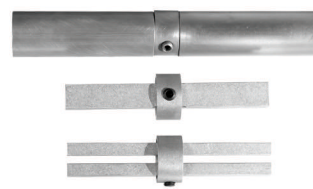
Pipe Wall Mount

Pipe wall mount has 5" of overlap on
grid pipe and is locked to pipe with
1/2" set screw. 4 holes to bolt to wall.
Part Number: WM1.5PM



Aluminum Pipe

Available in black anodized and silver finish,
schedule 40 and schedule 80, and in 10'
and 20' lengths. Part Number for silver
schedule 40: 6061-PI-1.5-S40-240



Mega-Quick Pipe™ Splice

Joins 1-1/2" pipes end to end without
drilling. Available for schedule 40 and
schedule 80, also for 1-1/4" pipe.
DL 600 lbs horizontal
Part Number: MQSM



Curved Pipe

1.5 pipe (1.9 OD) rolling dies can
make pipe rolled to your specified
radius.



Mega-Drop Down

Easily lower a light fixture. Wrench
flats provide for easy adjustments.
Available in 6", 12", 18", 24", and 36",
lengths. DL 600 lbs
6" Part Number: Mddb6



Mega-Drop Down Slider

Part Number: Mddb-SLIDER



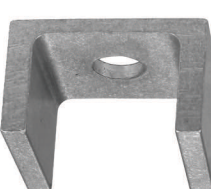
Atlas Mic Stand Adapter

Will hold a microphone mount
and thread into most clamps.
Part Numbers:
MICAM.5-13x.75 (Male)
MICA.F5-13x.75 (Female)



Metric to Inch MAC Adapter

Part Number:
MAC ADAPTOR DSP



Bar Joist Washer

Will not slip off the vertical
legs of a bar joist when
hanging threaded rod.
Part Number: BJWM



Mega-Cable Carrier™

Provides a channel to drop cables into
above the batten or grid.
DL 100 lbs.
Part Number: MCCM



Purlin Clamp

Installs to purlins, I-beams and bar joists
up to 1" thick. Available with 1/2" and
3/8" hardware. DL 500 lbs, 300 lbs
Part Numbers: PCM1/2 and PCM3/8



1/2-13 Eye Nut Part Number: NE.5-13X-ABZ



1/2 -13 x 1 Eye Bolt Part Number: EB.5-13x1.00-AZB



5/8 Shackle Part Number: Shackle 5/8 All available in a variety of sizes.

GRID SYSTEMS, CURTAIN TRACK



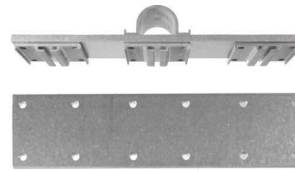
Mega-Pipe Strap™

1" wide, fits 1-1/2" pipe. Used for attaching pipe.
Part Number: MPS



M 140 Double Track Spacer

Will support two M140 tracks on 6" centers.
Part Number: M140-TH-DOUBLE-M



M 140 Triple Track Spacer

Will support three M140 tracks on 6" centers.
Part Number: M140-TH-TRIPLE-M



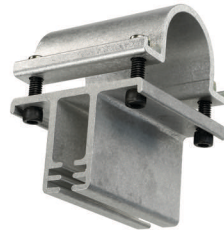
90° Wall Mount Track Hanger

Fits either a track hanger or a grid-lock for mounting track or pipe.
Part Number: M140WALLMOUNT9



Mega Track Hanger, Short™

1-1/4" pipe to 2" truss tube. Connects cyc track to bottom studio grid pipes. DL 300 lbs
Part Number: MTSB



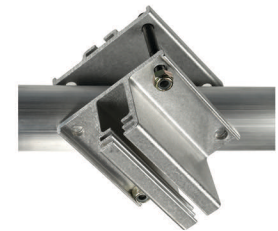
Mega Track Hanger, Long™

1-1/4" pipe to 2" truss tube. Connects cyc track to bottom studio grid pipes. DL 300 lbs
Part Number: MTLM



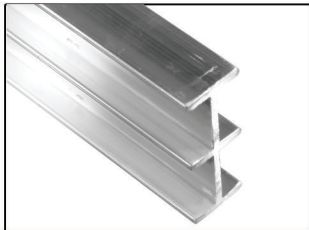
Track Hanger Diagonal Short™

Attaches to curtain track at any angle 3/16" below bottom grid pipe. Fastens with 2 5/16" socket screws.
Part Number: MTSDB



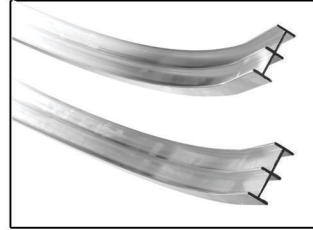
Track Hanger Diagonal Long™

Attaches to curtain track at any angle 2.1" below top grid pipe or bottom. Fastens with 2 5/16" socket screws.
Part Number: MTLDM



M140 Cyc Track

Stage/Studio curtain track with rounded edges. Black or silver.
Part Number: M140CYC-E-120



M140 Cyc Track

Stage/Studio curtain track with rounded edges. Machine rolled corners available to your radius specifications.



Track Stop in Place



Mega-Track Stop™

Curve matches wheel to prevent damage to carrier. Mounts with 5/16" bolt to keep carriers on track.
Part Number: M140TSTOPB



Mega-Track Punch

Easily makes perfectly located holes in track for Mega-Track Splice or end stops without drilling. Part Number: M140TPUNCH



Curtain track is inserted into the punch. Holes are easily punched and ready for track splices.



Track Splice

Quickly joins track for installations.
Part Number: M140TSB



Scenery Carrier

1-1/2" adjustments by rotating knurled wheel. Scenery attaches with two 1/4" fasteners. DL 50 pounds.
Part Number: M140CARRIER-ASCM



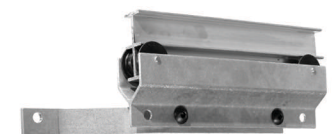
M140 Carrier

The 1.5" long body has 3/8" hole for attaching an S-hook or trim chain. DL 25 lbs
Part Number: M140CARRIERB



M140 Master Carrier

5.5" long body has three 3/8" holes 2" OC. For attaching S-hook or trim chains. DL 50 lbs
Part Number: M140CARRIERMASTERB



M 140 Offset Carrier

The 13" long carrier has 3/8" holes on 8" & 4" centers for attachments. DL 50 lbs
Part Number: M140CARRIERWLEG-M

EXTRAS



Micro-Mic™

Holds 5/8" Atlas mic stand tubes. Will clamp from 1/2" to 2".
Part Number: MKB.65



Mega-Handle™

Handle permanently stays with the fixture. Bolt nests into the cloverleaf socket.
Part Number: MQM



Mega-Combo Wrench™

Adjusts 1/2" and 5/16" hex head and square bolts. Fits on a keychain. Can be personalized with your logo.
Part Numbers: MCM, MCM-Black, MCM-Orange, MCM-Blue, MCM-Pink, MCM-Green, MCM-Purple, MCM-Gold, MCM-Red.



Mongo Wrench™

Fastens 1/2" and 5/16" hex head & square head bolts, plus coupler wing nuts.
Part Number: MLT



Uni-bolt for Strut Channel™

DL 250 lbs For "Unistrut" and "Kindorf" style 1-5/8" square channel. Allows easy movement of fixtures
Part Number: UB2B



Mega-Folding Floor Stand™

A compact folding stand for placing light fixtures on the stage floor. Folds out into a stable 15" light base. Folds up into a 6" square. Fits into corners, tight spaces, and against walls. Has replaceable rubber feet that will not mar floors.
Part Number for black finish: MFFSB
Part Number for silver finish: MFFSM



Slim Floor Stand

1/2" x 6" x 6" floor stand with 4 rubber feet and 3/8" hex hardware.
Part Number for silver finish: SMFMSM
Part Number for black finish: SMFSB



Safety Cable

Available in black, white, or silver.
Part Numbers: SCB, SCW, and SC.



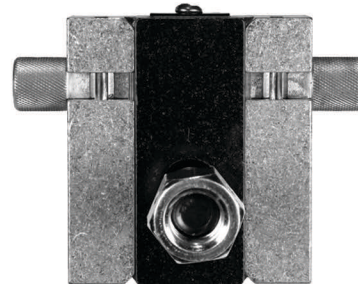
Genie Fork Adapter

DL 1,000 lbs Supplied with a 1/2" x 1" Grade 5 bolt and Belleville spring washer to fasten the load to the adapter. An additional 1/2" bolt locks the adapter to the Genie fork. Also fits a Sumner Fork.
Part Number: GFA



Center Point Genie Fork Adapter

Support speakers from a Genie Super Tower.
Part Number: GFA-CP-18-I



Mega-Quick Disconnect™

Allows the fixture to be released quickly from the pipe or truss, and then replaced in the same location
Part Number: FQRA



Removable Center Section



Mega-Quick Disconnect™ Shown on a Mega-Claw™



The Light Source, encompassing 63,000 square feet, is located at 3935 Westinghouse Blvd, in Charlotte, North Carolina.